

Unique on Passeig de Gràcia, modernist estate, next to La Pedrera - Casa Milà

Ref: CM12099



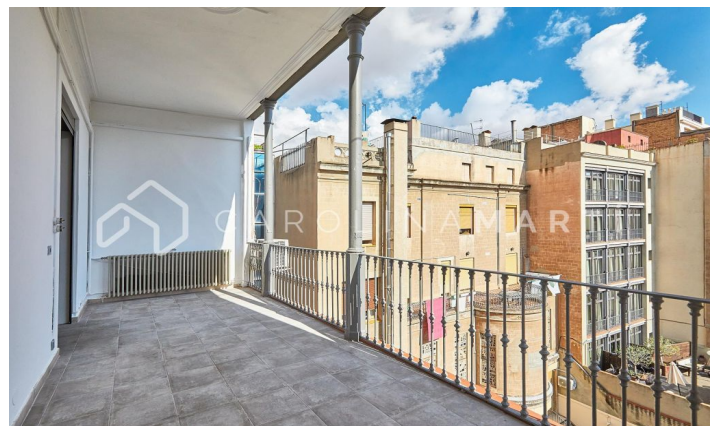
Eixample Dret / Barcelona

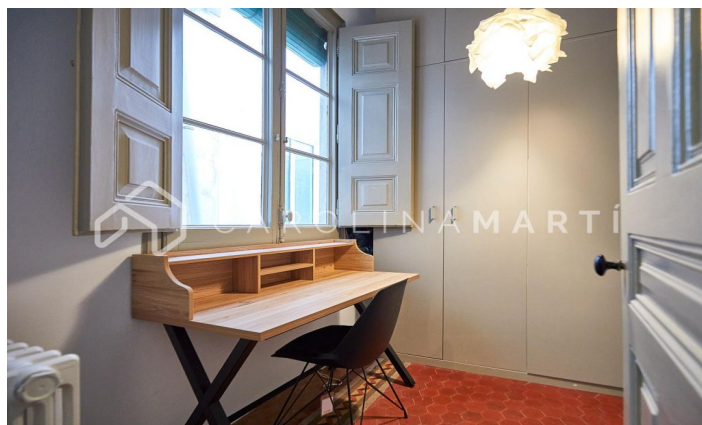
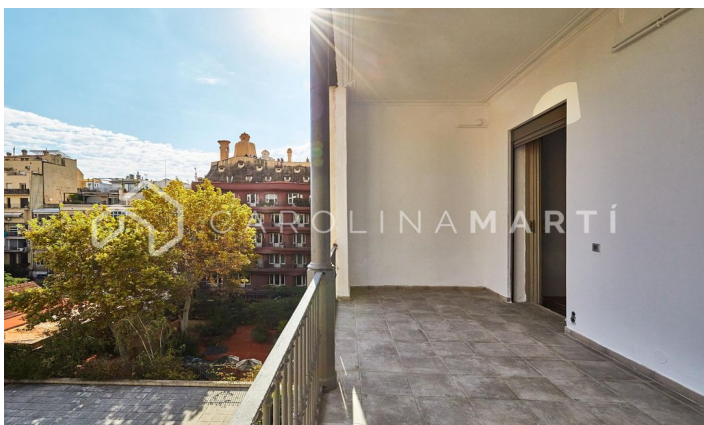
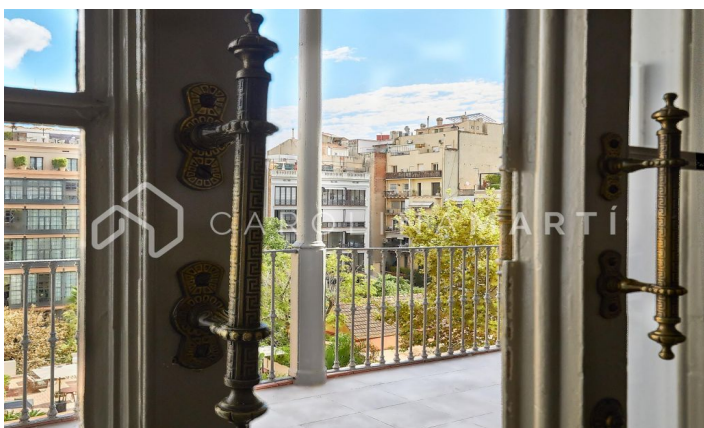
Unique on Passeig de Gràcia! Next to La Pedrera - Casa Milà, we present EXCLUSIVELY this impressive property. It is a modernist building, with a concierge service. Entrance with high ceilings and a marble staircase, recently renovated and refurbished. The property consists of approximately 240 m², as well as a 25 m² terrace. It has 4 bedrooms and 4 bathrooms, two living rooms with a fireplace and 2 balconies overlooking Passeig de Gràcia. Lots of sun and natural light in all rooms. High coffered ceilings and hydraulic tile floors, original and in excellent condition. Perfect layout, completely square, with wonderful and privileged views. 2 optional parking spaces in front of the building. Don't miss this opportunity! Get in touch for more information.

€2,350,000

215 m²
 4 Bedrooms
 4 Bathrooms
 A/C
 Heating
 Views
 Mountain views
 Storage
 Lift
 Fireplace
 Security
 Terrace
 Concierge
 Balcony
 Built-in closets
 Outside







Contact us for more information or to arrange a viewing

Tel: +34 93 241 10 95

info@carolinamarti.com

www.carolinamarti.es