

Fantastic new construction penthouse of 180 m2 with terrace and views

Ref: CM1500



Galvany / Barcelona

Ganduxer - Via Augusta. Fantastic 180 m2 penthouse plus 170 m2 terrace, unobstructed views of the park. Royal building rehabilitated as a new construction with only 3 neighbors. It is distributed in 3 large bedrooms (possible 4), 3 bathrooms and toilet, dining room with integrated kitchen of 50 m2. Ceilings with a height of 4 meters and a Catalan volta. Maximum quality standard, with Daikin Aerothermal system, Gaggenau and Miele kitchen equipment, oak wood floors, double thermal break and tilt-and-turn windows. Possibility of adding a pool on the deck. Delivery of the home in 2025. Together with Ferrocarriles Generalitat Bonanova.

€1,640,000

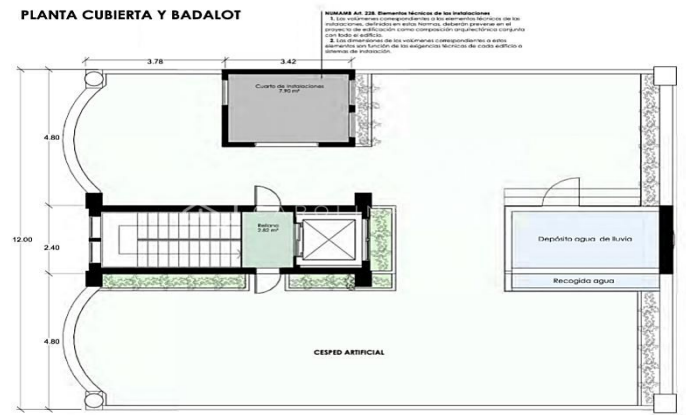
180 m²
 3 Bedrooms
 4 Bathrooms
 A/C
 Heating
 Views
 Lift
 Furnished
 Terrace
 Balcony
 Built-in closets
 Outside



PLANTA 2ª -



PLANTA CUBIERTA Y BADALOT





Contact us for more information or to arrange a viewing

Tel: +34 93 241 10 95

info@carolinamarti.com

www.carolinamarti.es