

Duplex penthouse with two terraces for rent in l'Eixample, Barcelona

Ref: CM1254

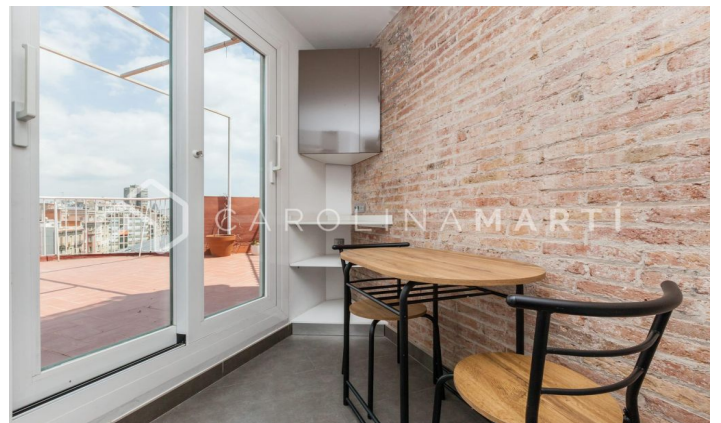
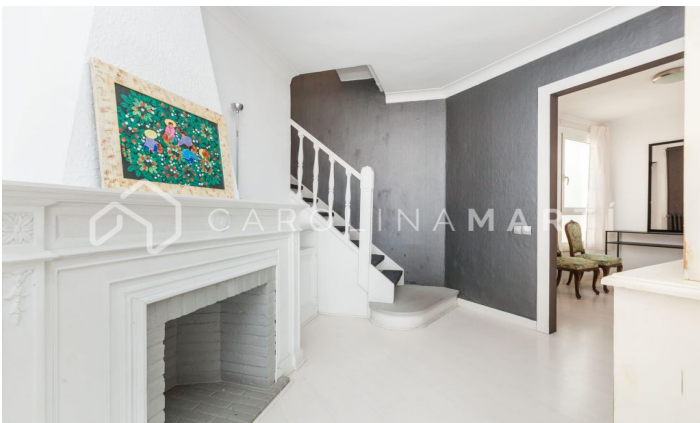


La Nova Esquerra de l'Eixample / Barcelona

Carolina Martí presents this duplex penthouse with two terraces for rent, located on the corner of Consell de Cent, l'Eixample. The penthouse has a total area of approximately 220 m² constructed. The interior of the property is distributed in four large bedrooms and two complete bathrooms with bathtubs. On the first floor we find two of the bedrooms, a bathroom, a modern kitchen and a spacious living-dining room that opens onto a terrace of almost 40 m² with views of the city and the mountains. On the second floor there are two other double bedrooms, a complete bathroom and a second 30 m² terrace also with unobstructed views. This penthouse is in perfect condition after having been recently renovated, with quality finishes in all its rooms. It is delivered equipped with modern furniture and equipped with high-end appliances. It also has two decorative fireplaces, one on each floor. Air conditioning in all rooms, gas heating by radiators and fitted wardrobes in the bedrooms. Building constructed in 1959 with elevator. Call us to visit the apartment.

PRICE UPON REQUEST

220 m²
4 Bedrooms
2 Bathrooms
A/C
Heating
Views
Mountain views
Lift
Furnished
Fireplace
Terrace







Contact us for more information or to arrange a viewing

Tel: +34 93 241 10 95

info@carolinamarti.com

www.carolinamarti.es